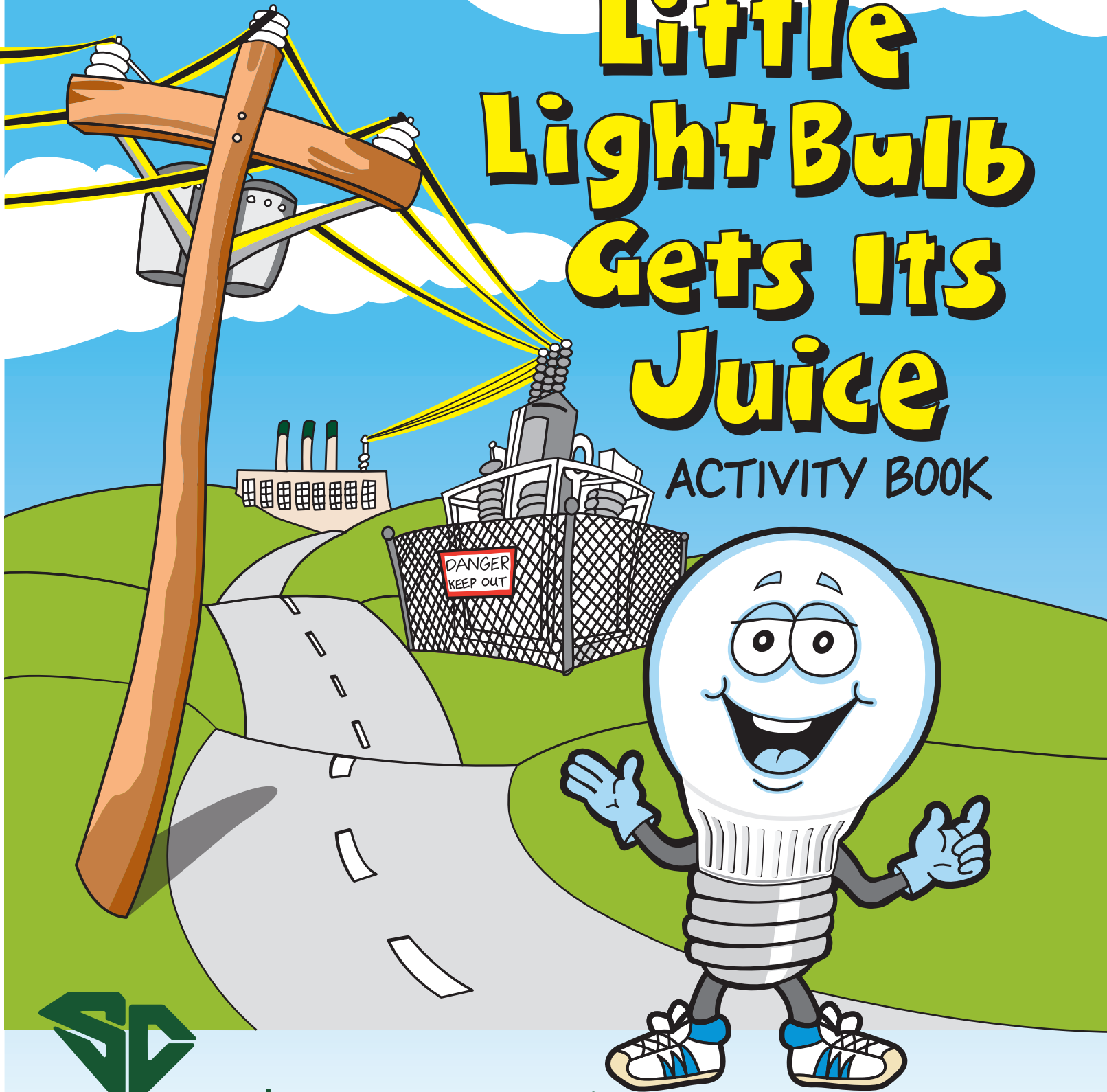
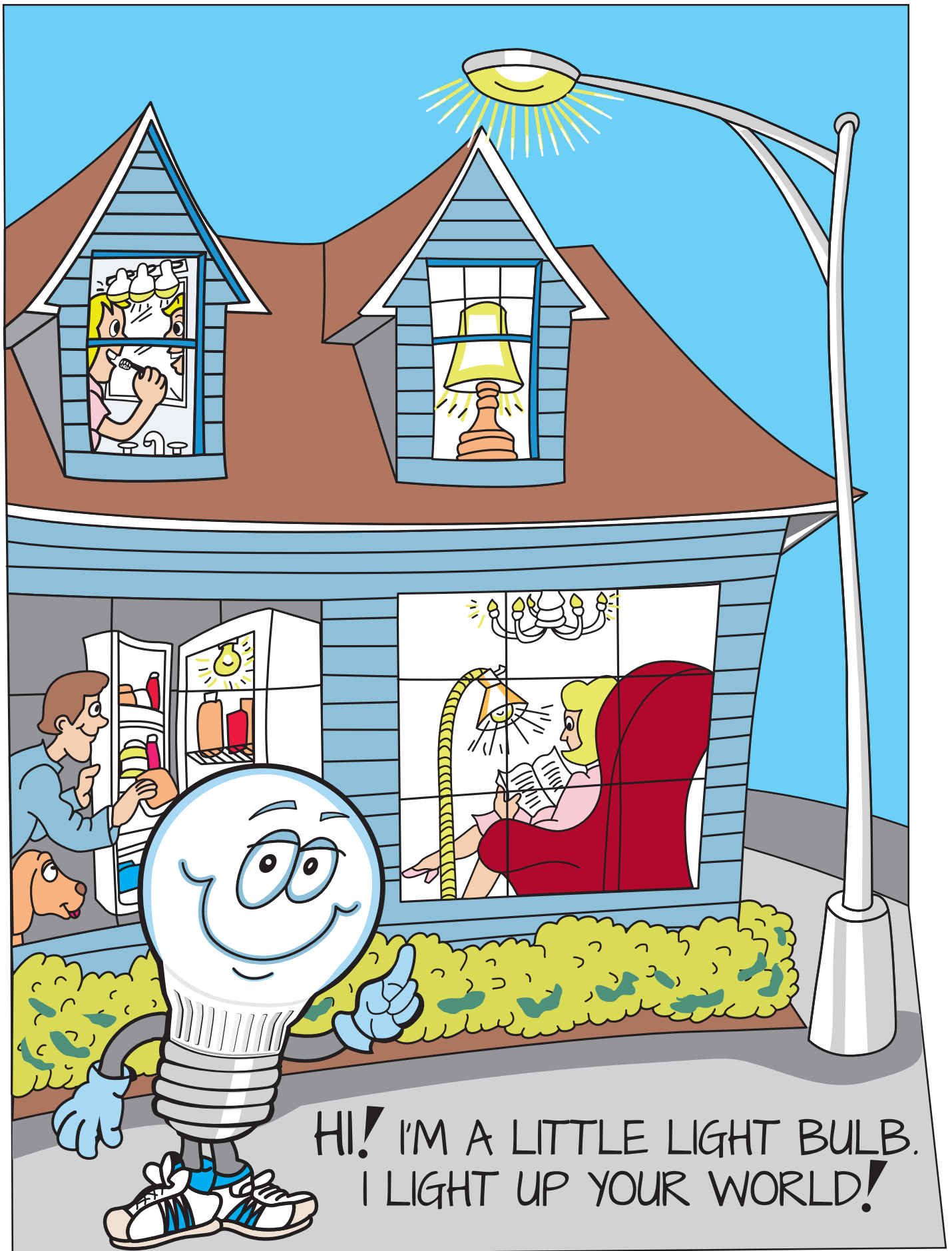


Where The Little Light Bulb Gets Its Juice

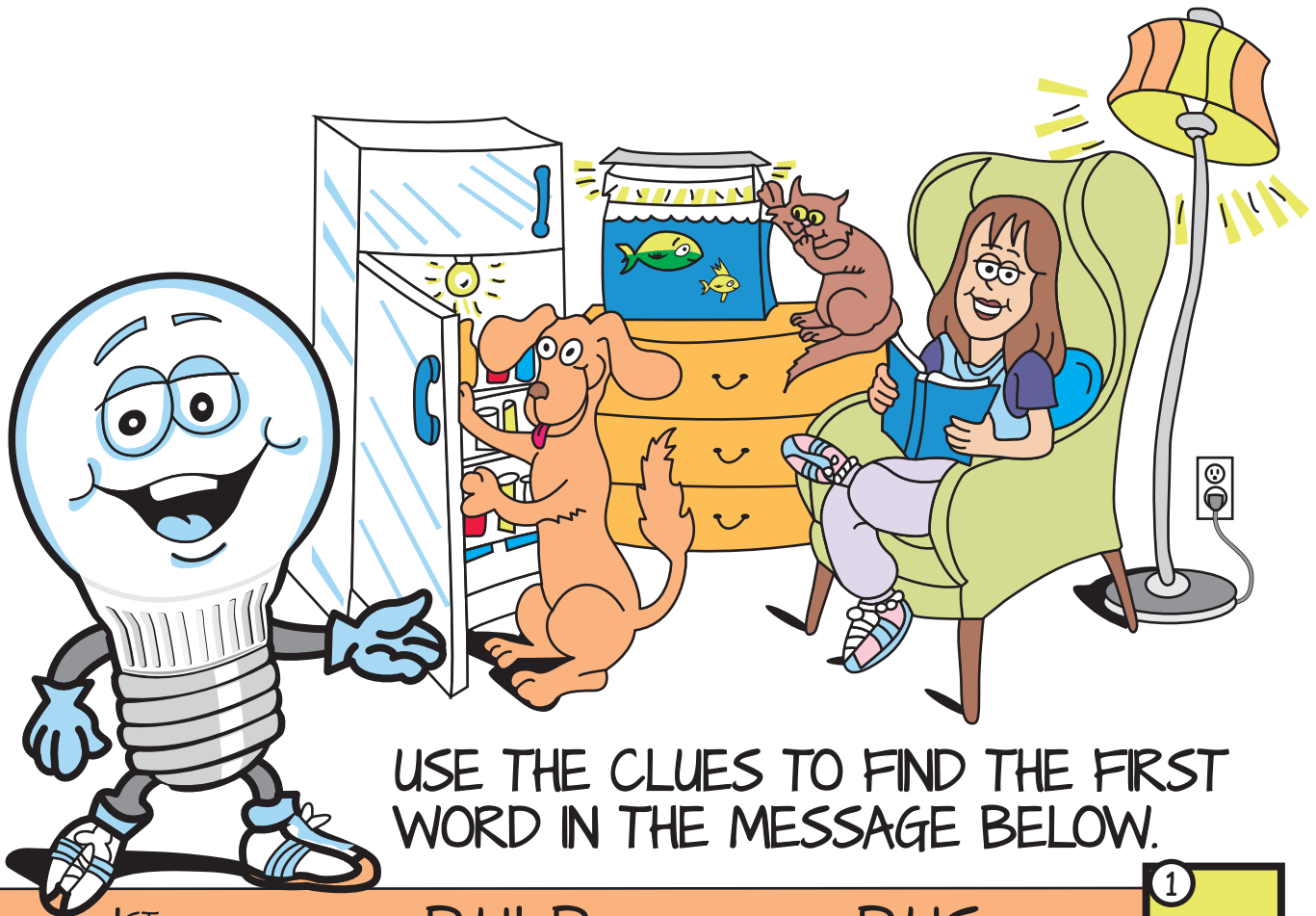
ACTIVITY BOOK



santee cooper®



HI! I'M A LITTLE LIGHT BULB.
I LIGHT UP YOUR WORLD!



USE THE CLUES TO FIND THE FIRST WORD IN THE MESSAGE BELOW.

THE 1ST LETTER IS IN BULB, BUT NOT IN BUS



1

THE 2ND LETTER IS IN SIT, BUT NOT IN SAT



2

THE 3RD LETTER IS IN GLOW, BUT NOT IN OWL



3

THE 4TH LETTER IS IN SHINE, BUT NOT IN SPINE



4

THE 5TH LETTER IS IN KITE, BUT NOT IN CHICKEN



5



1

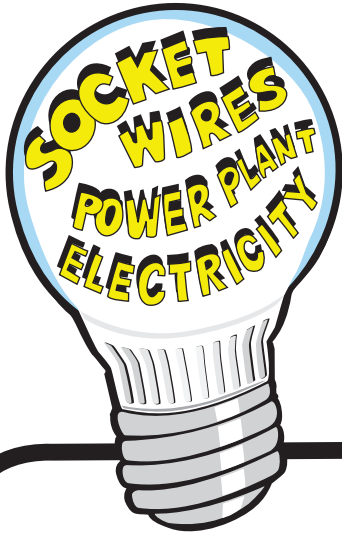
2

3

4

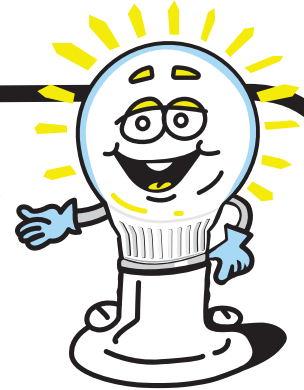
5

**BULBS HELP US IN
MANY WAYS!**

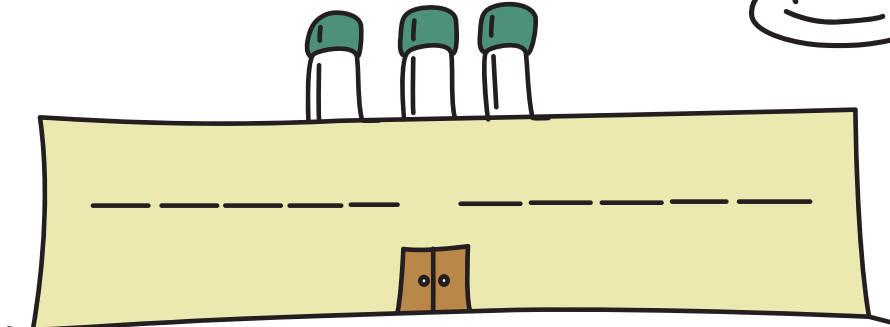


USING THE WORDS IN
THE LIGHT BULB, COMPLETE
THE SENTENCES BELOW.

1. I AM A _____ FOR
A LIGHT BULB.



2. IN A _____

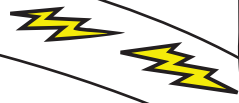


ELECTRICITY IS MADE.

3. ELECTRICITY GETS TO OUR HOMES
THROUGH _____



4. I TRAVEL THROUGH WIRES. I AM _____

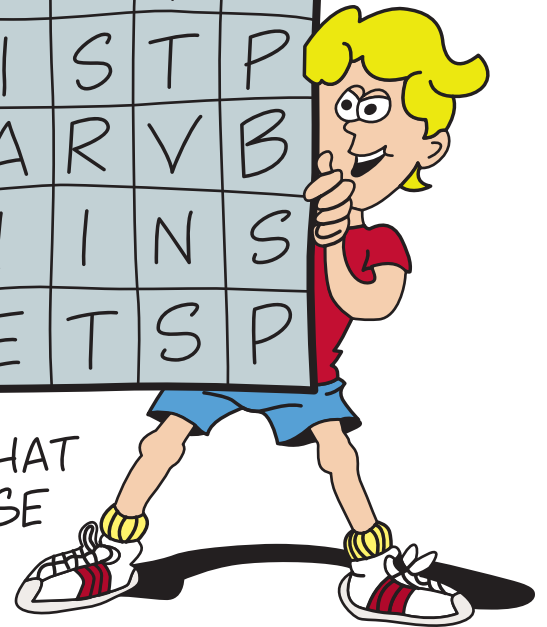
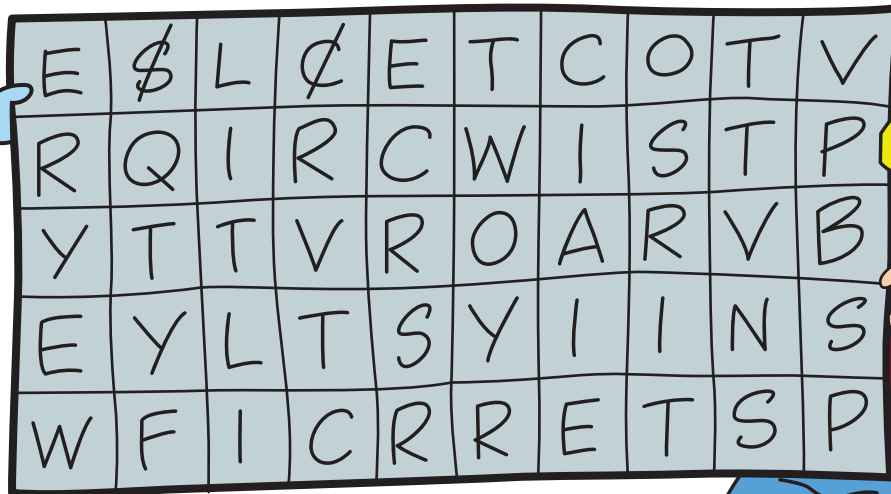
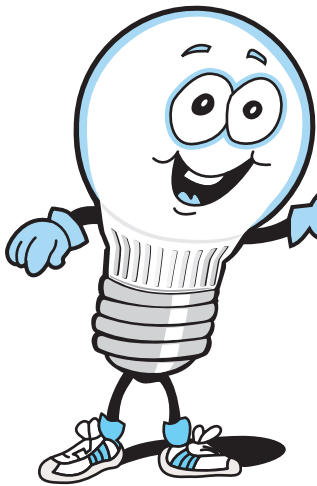


HIDDEN MESSAGE

HOW DOES ELECTRICITY GET FROM THE GENERATING PLANT TO STORES AND OUR HOMES?



CROSS OUT EVERY OTHER LETTER STARTING WITH THE LETTER "S" IN THE FIRST ROW ACROSS!

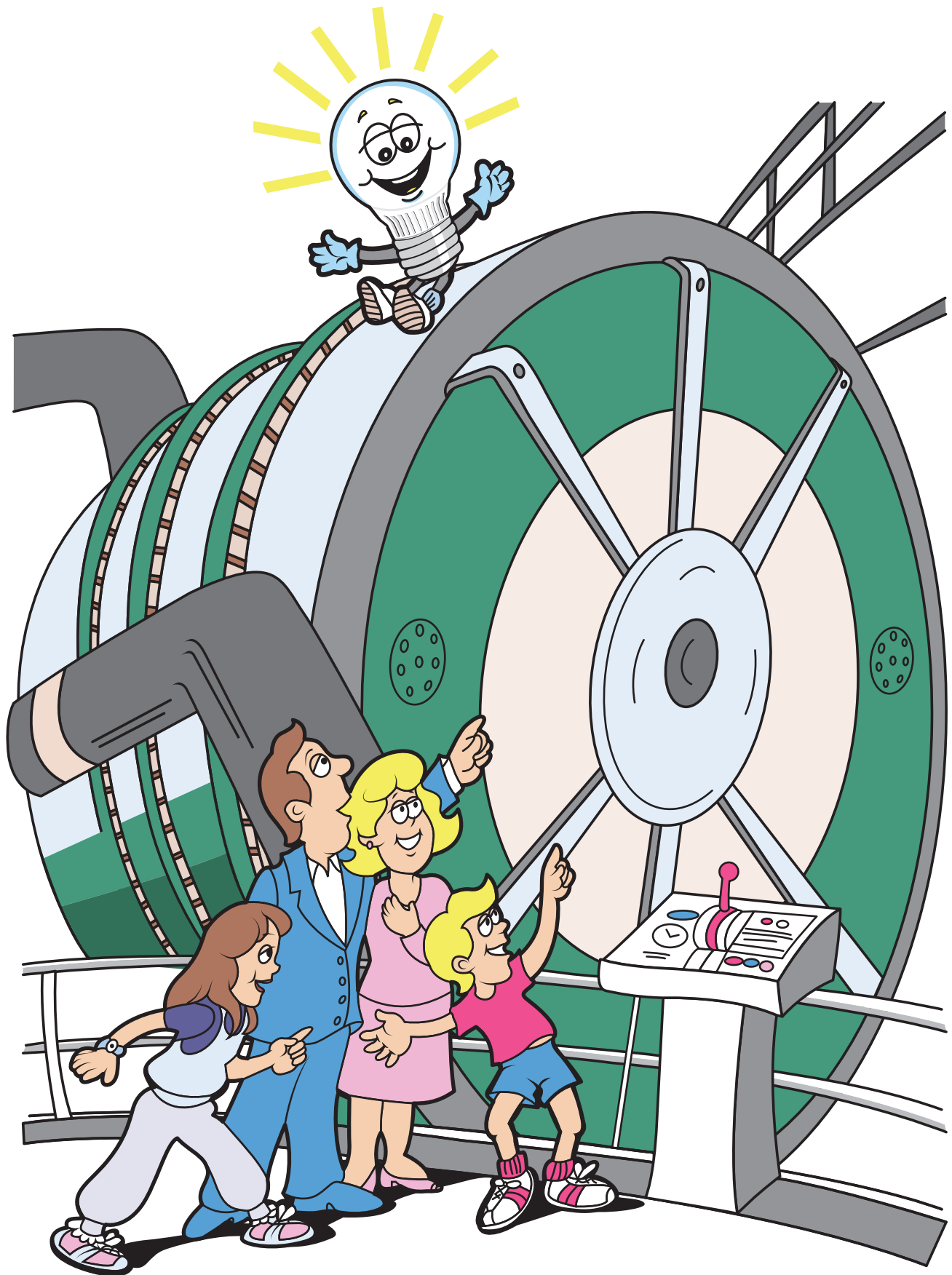


WRITE THE LETTERS THAT ARE LEFT OVER ON THESE BLANKS TO READ THE MESSAGE!



E

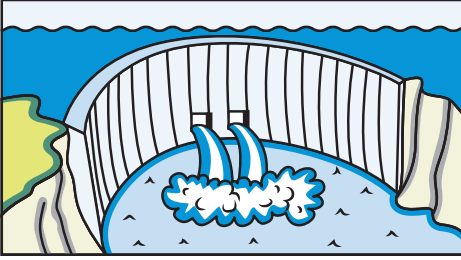




THE ELECTRICITY IN YOUR HOME MAY COME FROM ONE OF THE GIANT TURBINE GENERATORS AT A POWER PLANT.

MAKING ELECTRICITY

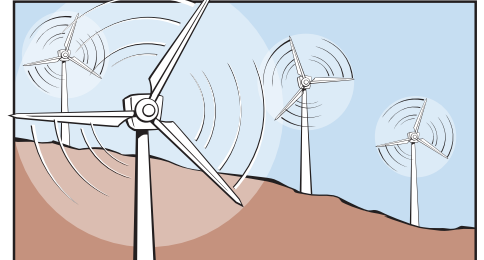
UNSCRAMBLE THE WORDS BELOW EACH PICTURE & FILL IN THE BLANKS.



TREWA



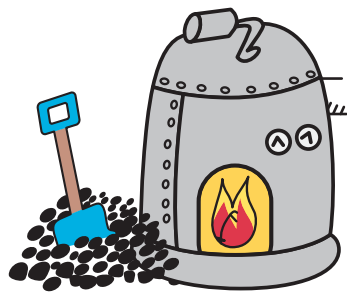
ETASM



DIWN

THE GENERATORS THAT PRODUCE POWER ARE TURNED BY

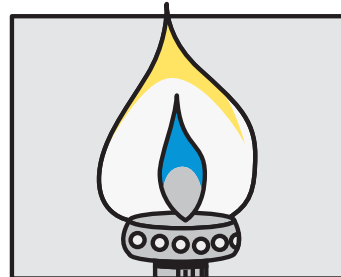
_____, _____, AND _____.



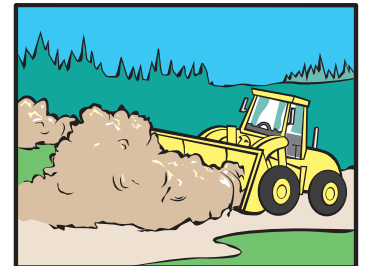
OLCA



OLI



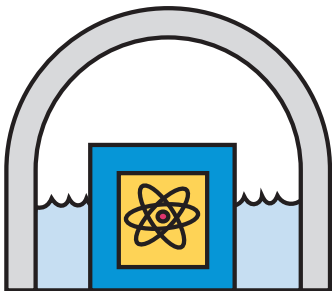
NATURAL
SAG



MASBIOS

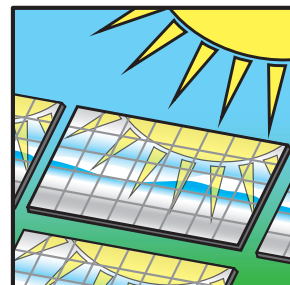
TO HEAT WATER TO MAKE STEAM WE BURN _____,

_____, NATURAL _____, AND _____.



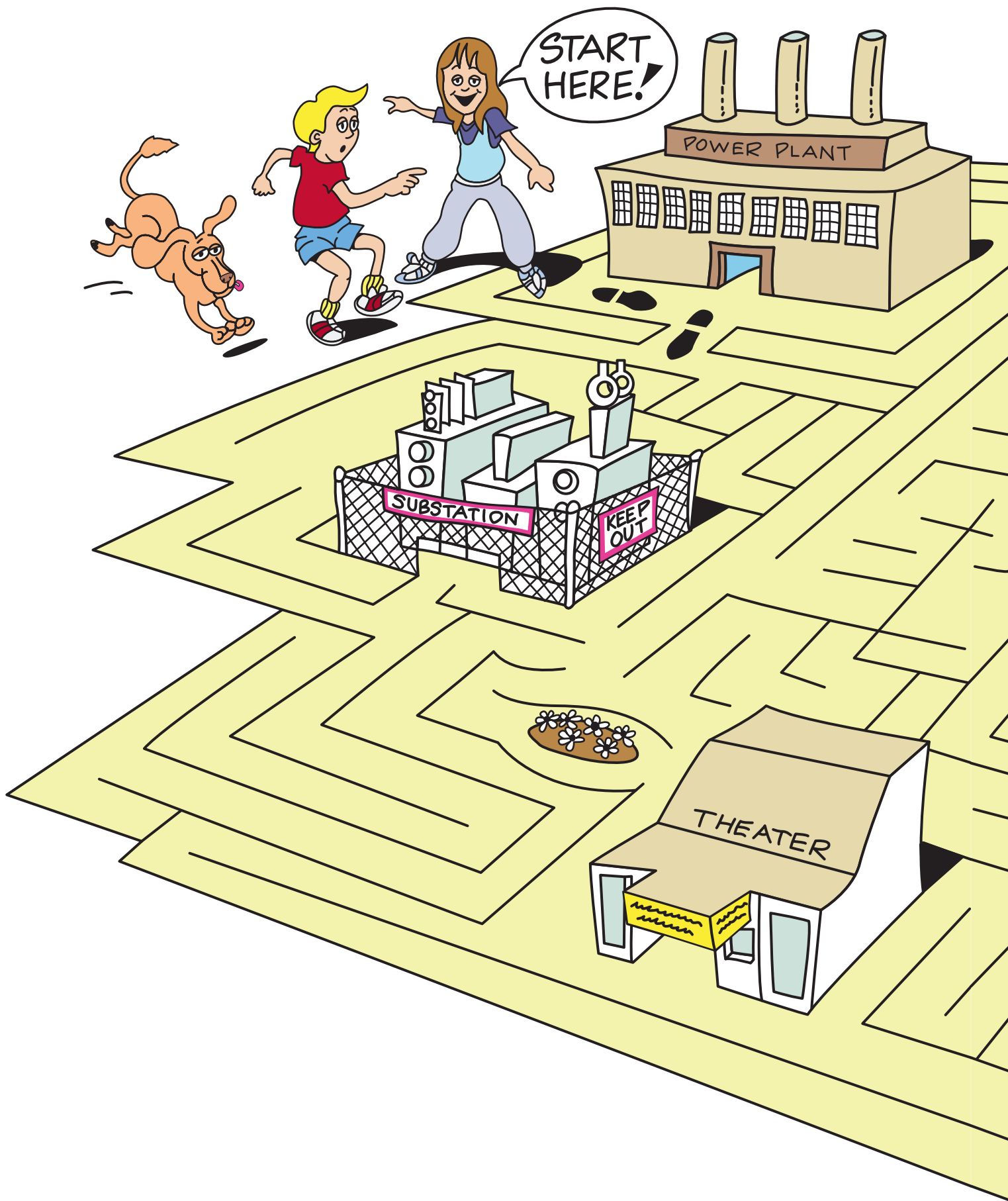
SOMAT

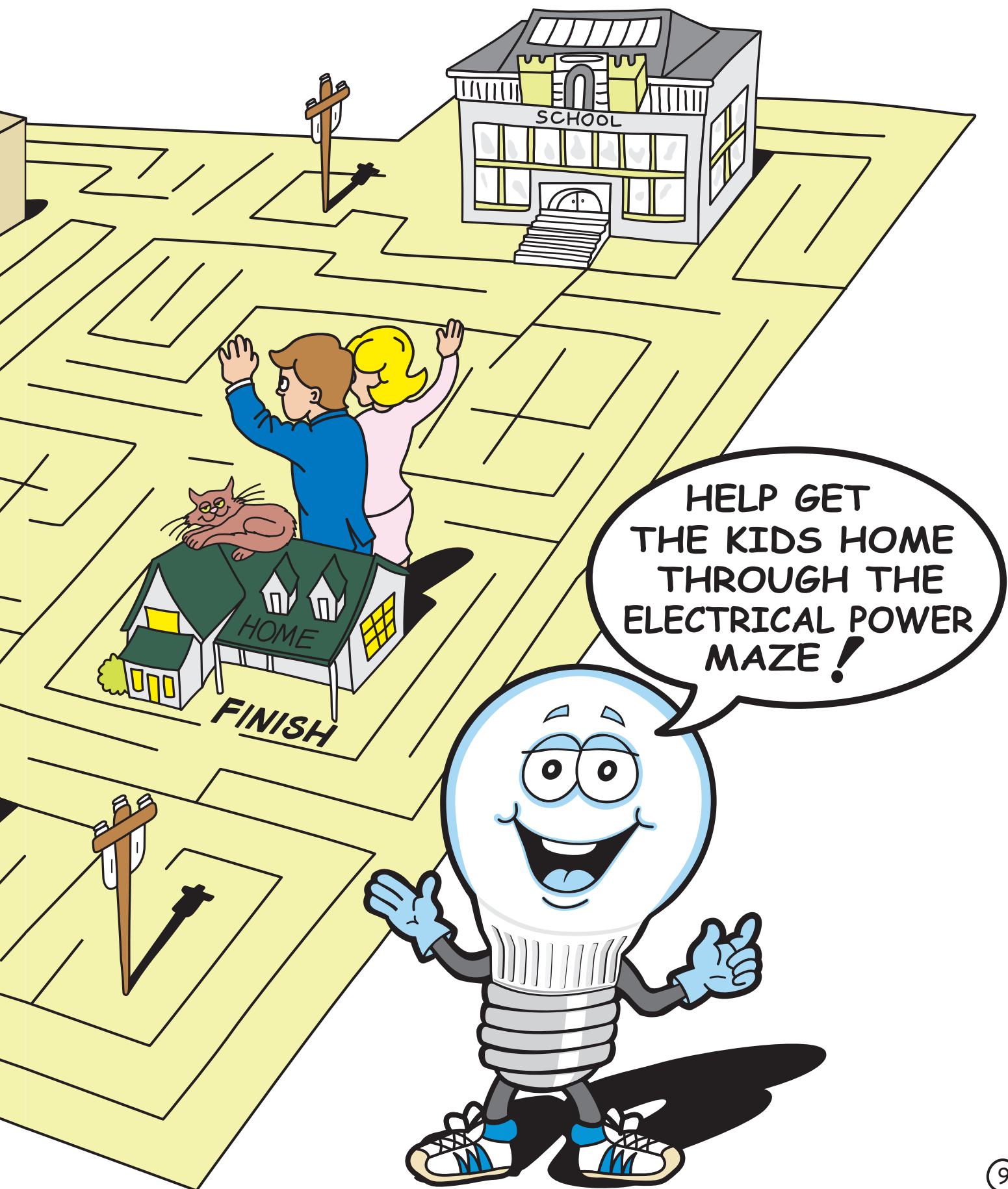
IN A NUCLEAR
POWER PLANT,
WE USE HEAT
MADE BY
SPLITTING _____
TO MAKE STEAM.



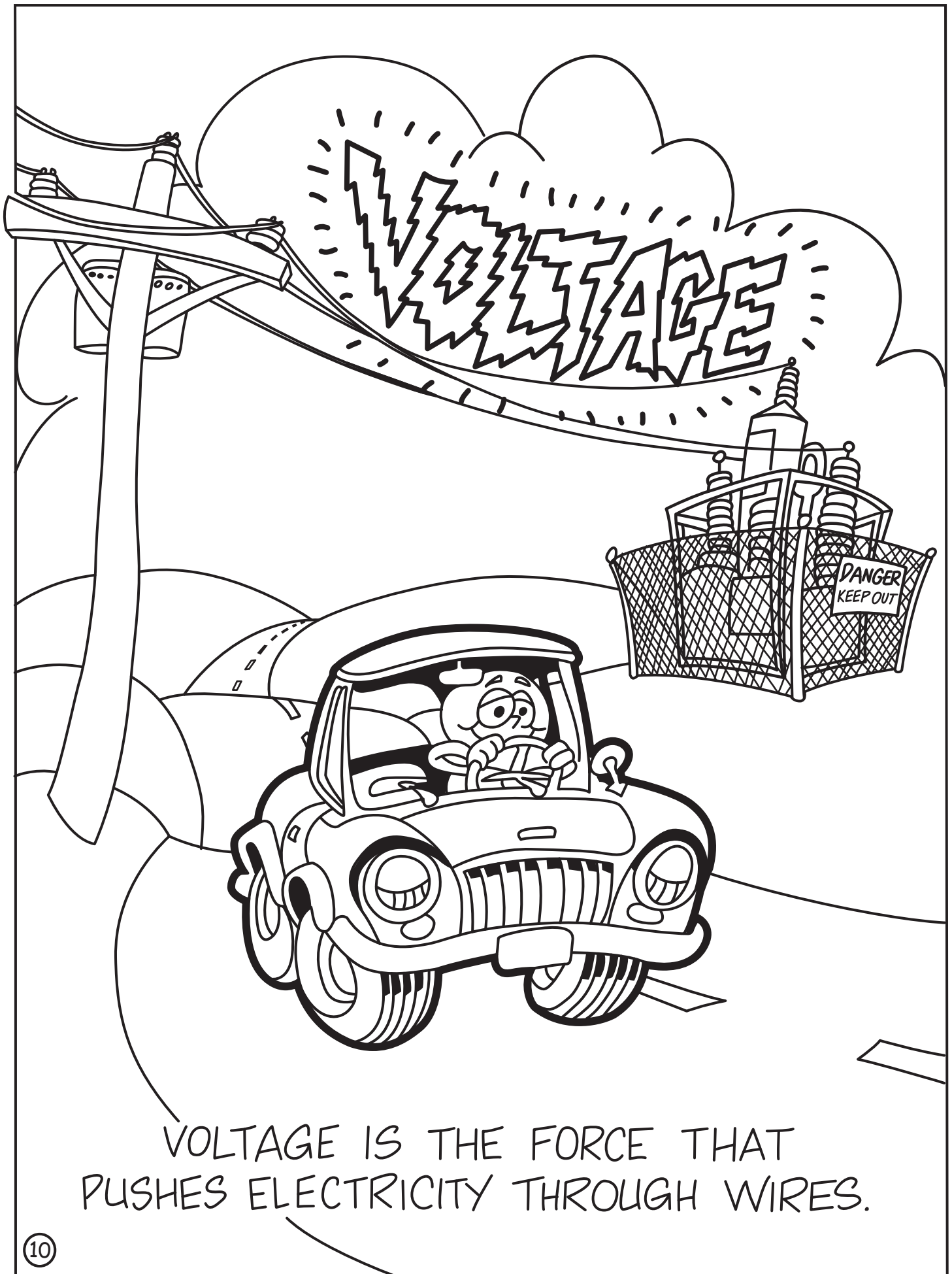
SUNTIGHL

SOLAR PANELS
CONVERT _____
INTO
ELECTRICITY.





HELP GET
THE KIDS HOME
THROUGH THE
ELECTRICAL POWER
MAZE!

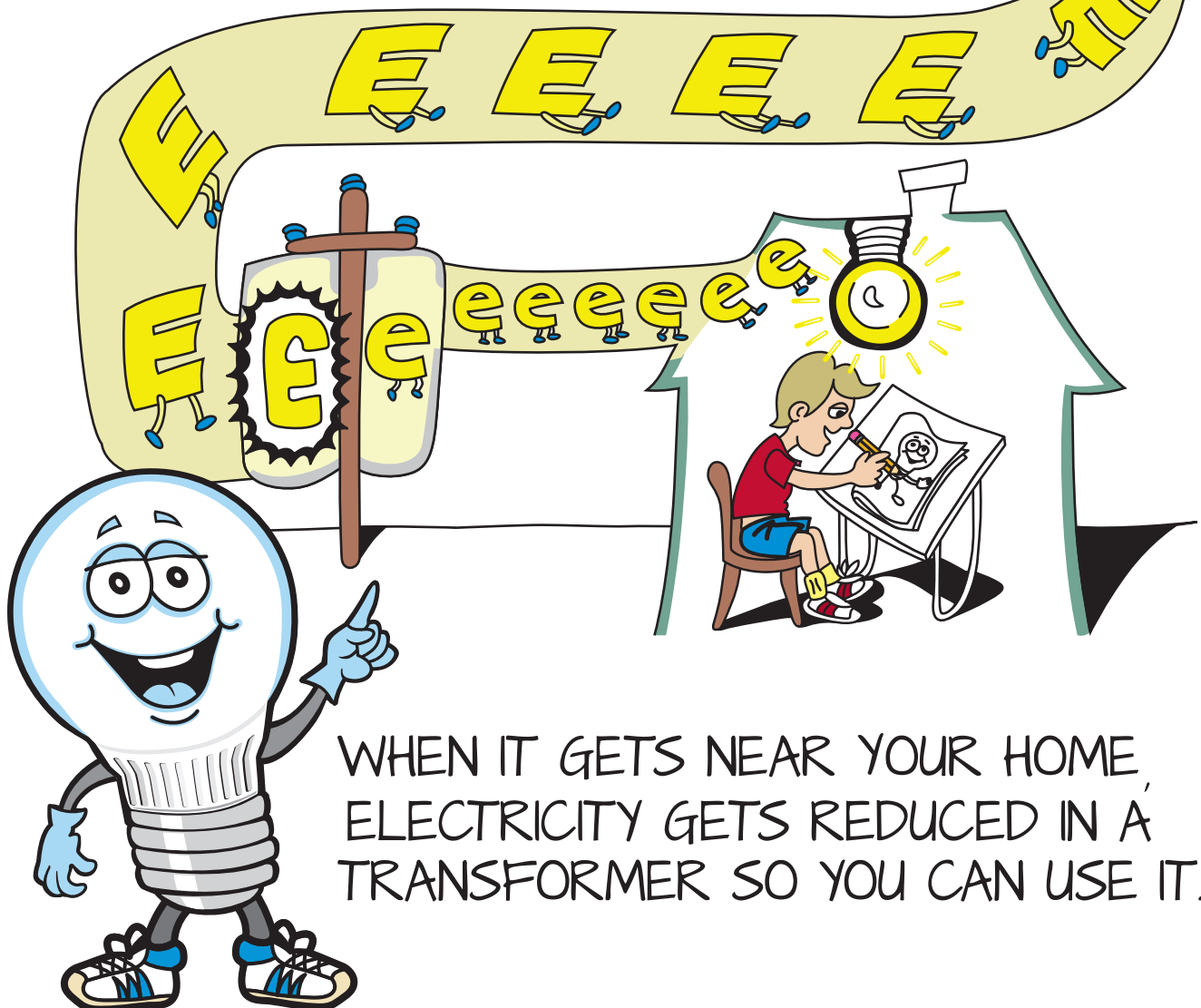


VOLTAGE IS THE FORCE THAT
PUSHES ELECTRICITY THROUGH WIRES.

TRANSFORMERS!

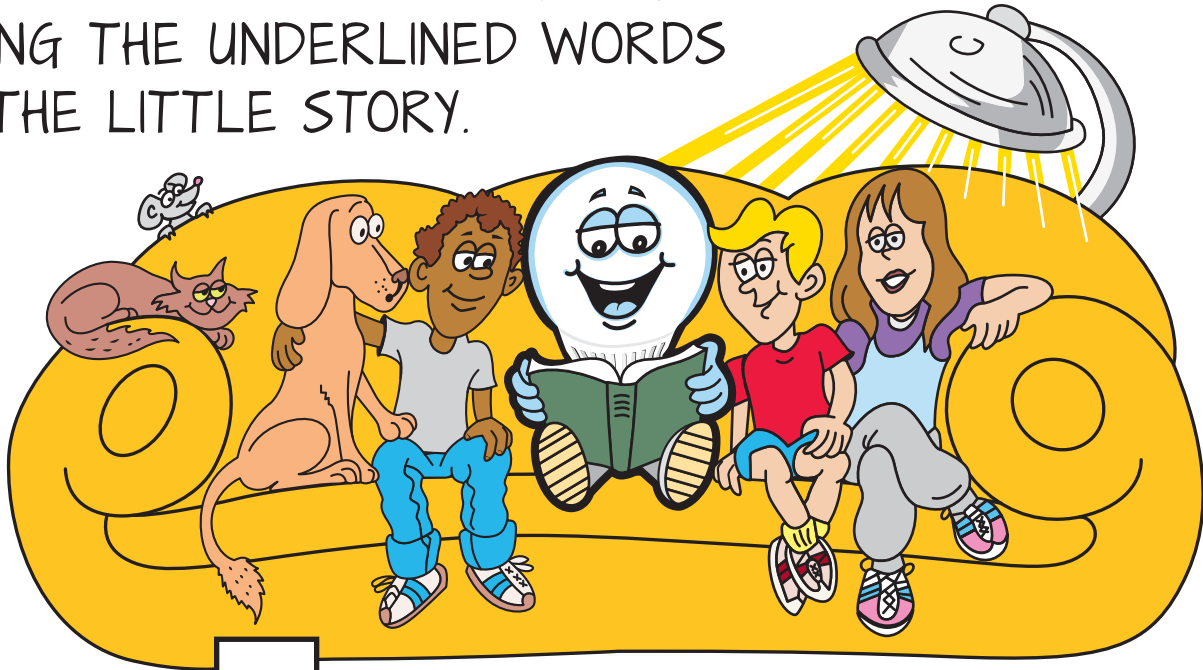


ELECTRICITY GETS A BOOST IN A TRANSFORMER FOR ITS TRIP TO YOUR HOME.

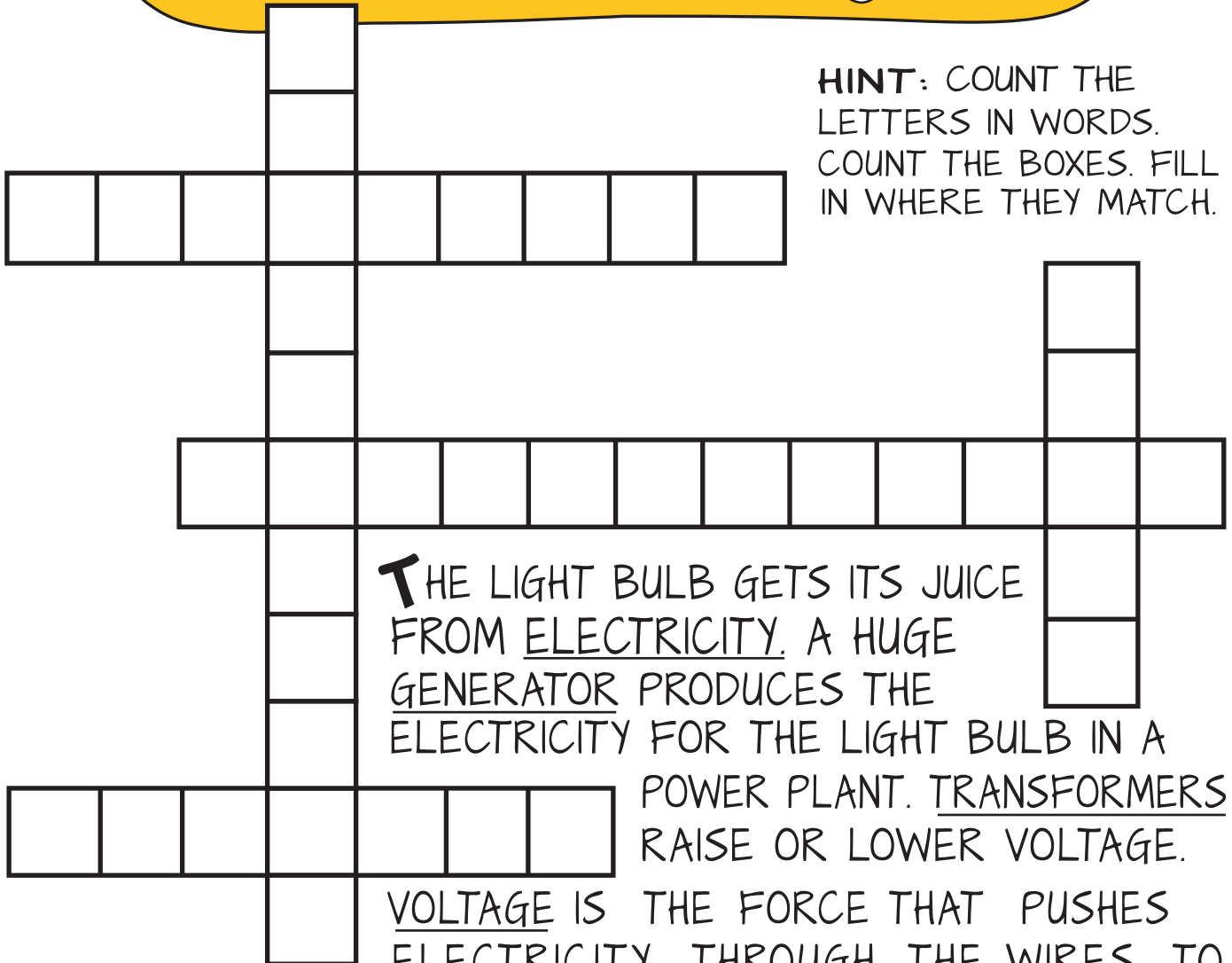


WHEN IT GETS NEAR YOUR HOME,
ELECTRICITY GETS REDUCED IN A
TRANSFORMER SO YOU CAN USE IT.

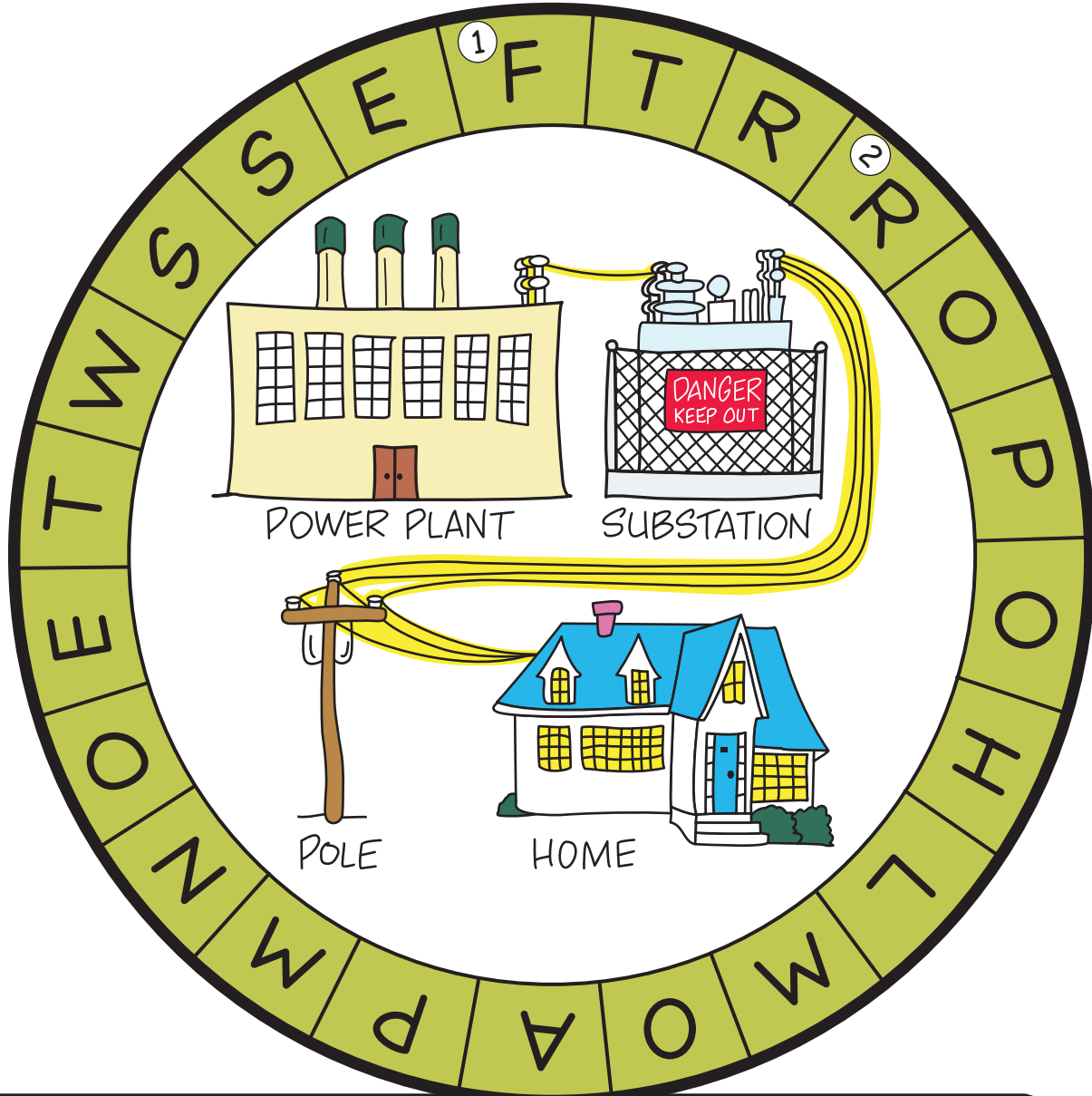
DIRECTIONS: FILL IN THE SPACES
USING THE UNDERLINED WORDS
IN THE LITTLE STORY.



HINT: COUNT THE
LETTERS IN WORDS.
COUNT THE BOXES. FILL
IN WHERE THEY MATCH.



TO FIND THE SECRET MESSAGE, START WITH THE LETTER "F" AND GO CLOCKWISE AROUND THE CIRCLE, WRITING DOWN EVERY THIRD LETTER IN THE SPACES BELOW.



| | | | | | | | | | | |
|---|---|---|---|---|---|---|---|----------------|----------------|---|
| E | L | E | C | T | R | I | C | I | T | Y |
| T | R | A | V | E | L | S | 💡 | F ^① | R ^② | |
| | | | | | 💡 | | | | | |
| | | 💡 | | | | | | | | |



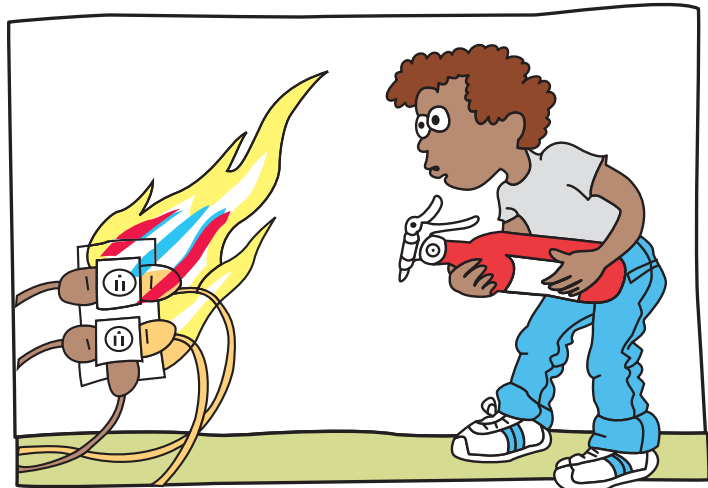
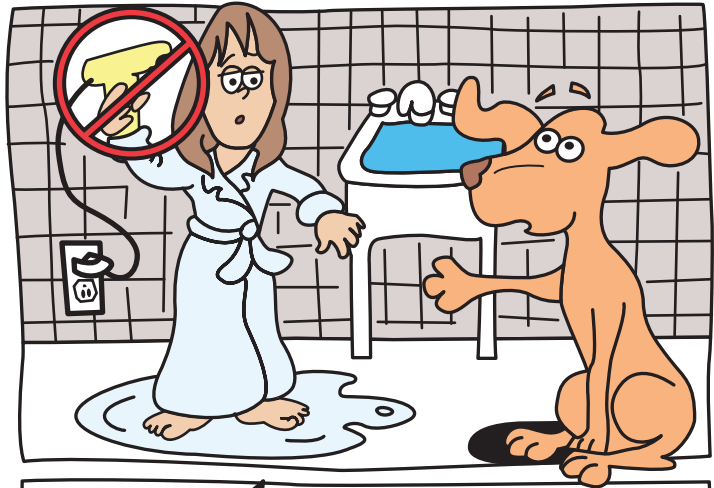
ELECTRICITY IS A USEFUL FRIEND, BUT IT CAN BE **DANGEROUS...** SO BE CAREFUL!

DRAW A LINE FROM EACH ELECTRICAL SAFETY RULE TO THE CORRECT PICTURE.

USE A FIRE EXTINGUISHER MADE FOR ELECTRICAL FIRES-- NOT WATER!

WATER AND ELECTRICITY DON'T MIX!

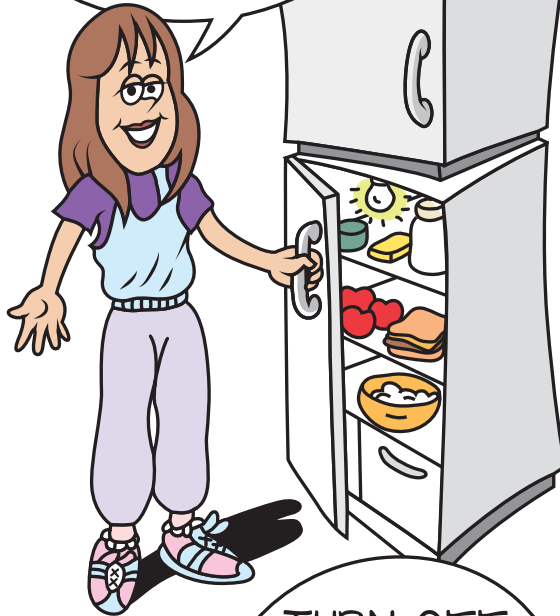
FLY KITES OR MODEL AIRPLANES AWAY FROM POWER LINES!



YOU CAN HELP

BY CONSERVING
ELECTRICITY AND ALL
FORMS OF ENERGY!

SHUT THE
REFRIGERATOR
TO KEEP IN COLD.



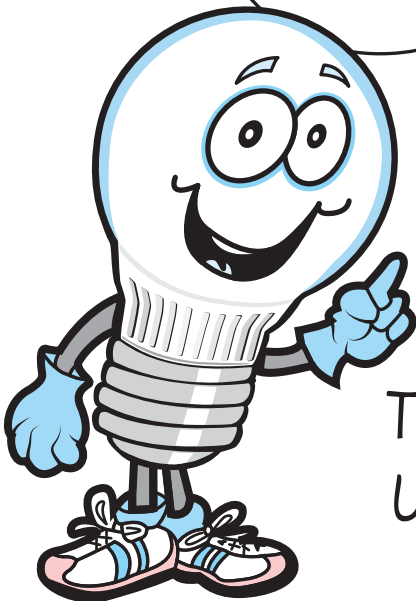
CLOSE WINDOWS
TO KEEP WARM IN
WINTER AND COOL
IN SUMMER.



TURN OFF
THE TV
WHEN NO ONE
IS WATCHING.

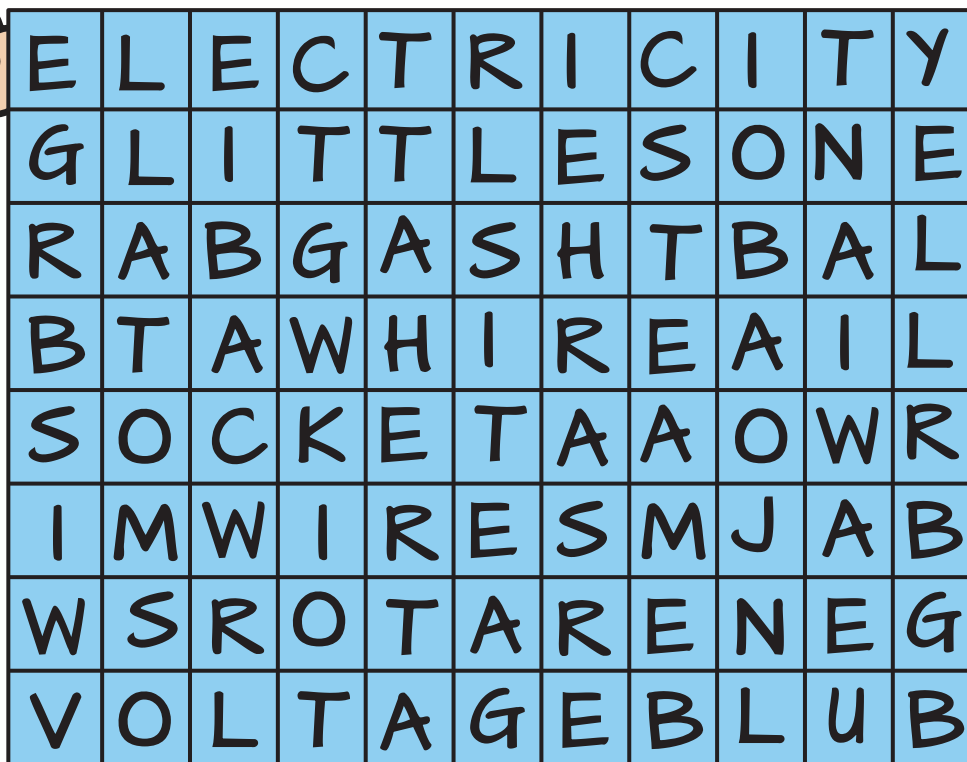


TURN OFF
LIGHTS WHEN
YOU LEAVE
THE ROOM.



TO **CONSERVE** MEANS TO SAVE!
USE ENERGY WISELY!

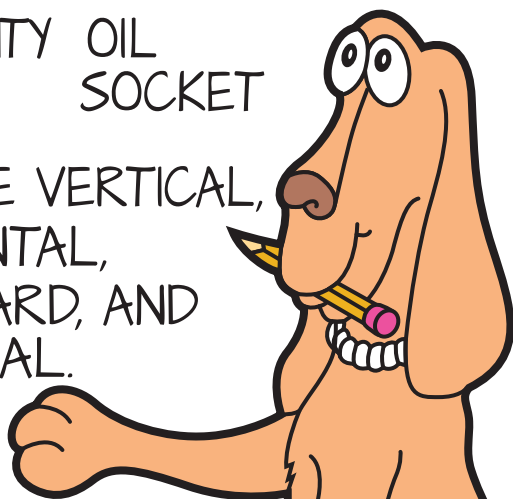
WORD SEARCH



CAN YOU FIND
THESE THIRTEEN
WORDS HIDDEN
IN THE WORD SEARCH?

| | | |
|-------------|-----------|---------|
| ATOMS | GENERATOR | STEAM |
| BULB | LIGHT | VOLTAGE |
| COAL | LITTLE | WIRES |
| ELECTRICITY | OIL | |
| GAS | SOCKET | |

THEY ARE VERTICAL,
HORIZONTAL,
BACKWARD, AND
DIAGONAL.



SOLUTIONS TO ACTIVITY PAGES

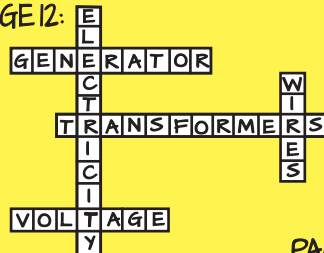
PAGE 3: **LIGHT**

PAGE 4: 1. SOCKET, 2. POWER PLANT,
3. WIRES, 4. ELECTRICITY

PAGE 5: ELECTRICITY TRAVELS IN WIRES.

PAGE 7: WATER, STEAM, AND WIND;
COAL, OIL, NATURAL GAS, AND BIOMASS;
ATOMS, SUNLIGHT.

PAGE 12:



PAGE 16:

PAGE 13: ELECTRICITY
TRAVELS FROM
POWER PLANTS
TO HOMES.

PAGE 14:

